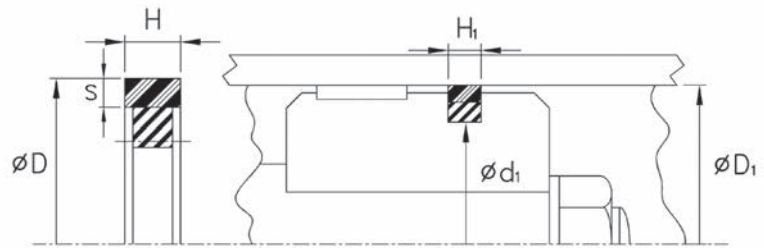
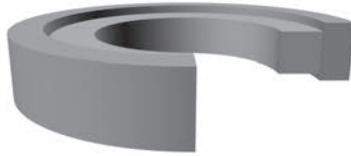




Sellos y Retenes de San Luis, S.A. de C.V.

TFER/B - Piston Seals

BR.PTFE/Nitrile



Temperature: -65/225F [-54/107C]

Pressure: 5000 PSI [345 BAR]

Ref.Number	Bore diameter		Nominal Seal Dimensions				Housing Dimensions			
		Tol.	D	S	H	EXP.	d1	Tol.	H1	Tol.
TFER-01000/B	1.000	+0.003 / -0.000	1.000	0.067 - 0.073	0.116 - 0.121	-115	0.690	+0.000 / -0.004	0.125	+0.002 / -0.000
TFER-01250/B	1.250	+0.003 / -0.000	1.250	0.067 - 0.073	0.116 - 0.121	-119	0.940	+0.000 / -0.004	0.125	+0.002 / -0.000
TFER-01500/B	1.500	+0.003 / -0.000	1.500	0.067 - 0.073	0.116 - 0.121	-123	1.190	+0.000 / -0.004	0.125	+0.002 / -0.000
TFER-01750/B	1.750	+0.003 / -0.000	1.750	0.067 - 0.073	0.116 - 0.121	-127	1.440	+0.000 / -0.004	0.125	+0.002 / -0.000
TFER-02000/B	2.000	+0.003 / -0.000	2.000	0.067 - 0.073	0.116 - 0.121	-131	1.690	+0.000 / -0.004	0.125	+0.002 / -0.000
TFER-02250/B	2.250	+0.003 / -0.000	2.250	0.067 - 0.073	0.116 - 0.121	-135	1.940	+0.000 / -0.004	0.125	+0.002 / -0.000
TFER-02500/B	2.500	+0.003 / -0.000	2.500	0.067 - 0.073	0.116 - 0.121	-139	2.190	+0.000 / -0.004	0.125	+0.002 / -0.000
TFER-02750/B	2.750	+0.003 / -0.000	2.750	0.067 - 0.073	0.116 - 0.121	-143	2.440	+0.000 / -0.004	0.125	+0.002 / -0.000
TFER-03000/B	3.000	+0.004 / -0.000	3.000	0.087 - 0.093	0.269 - 0.274	-333	2.444	+0.000 / -0.004	0.278	+0.002 / -0.000
TFER-03250/B	3.250	+0.004 / -0.000	3.250	0.087 - 0.093	0.269 - 0.274	-335	2.694	+0.000 / -0.004	0.278	+0.002 / -0.000
TFER-03500/B	3.500	+0.004 / -0.000	3.500	0.087 - 0.093	0.269 - 0.274	-337	2.944	+0.000 / -0.004	0.278	+0.002 / -0.000
TFER-03750/B	3.750	+0.004 / -0.000	3.750	0.087 - 0.093	0.269 - 0.274	-339	3.194	+0.000 / -0.004	0.278	+0.002 / -0.000
TFER-04000/B	4.000	+0.004 / -0.000	4.000	0.087 - 0.093	0.269 - 0.274	-341	3.444	+0.000 / -0.004	0.278	+0.002 / -0.000
TFER-04250/B	4.250	+0.004 / -0.000	4.250	0.087 - 0.093	0.269 - 0.274	-343	3.694	+0.000 / -0.004	0.278	+0.002 / -0.000
TFER-04500/B	4.500	+0.004 / -0.000	4.500	0.087 - 0.093	0.269 - 0.274	-345	3.944	+0.000 / -0.004	0.278	+0.002 / -0.000
TFER-04750/B	4.750	+0.004 / -0.000	4.750	0.087 - 0.093	0.269 - 0.274	-347	4.194	+0.000 / -0.004	0.278	+0.002 / -0.000
TFER-05000/B	5.000	+0.004 / -0.000	5.000	0.087 - 0.093	0.269 - 0.274	-349	4.444	+0.000 / -0.004	0.278	+0.002 / -0.000
TFER-05250/B	5.250	+0.004 / -0.000	5.250	0.137 - 0.147	0.362 - 0.367	-425	4.476	+0.000 / -0.010	0.375	+0.005 / -0.000
TFER-05500/B	5.500	+0.004 / -0.000	5.500	0.137 - 0.147	0.362 - 0.367	-427	4.726	+0.000 / -0.010	0.375	+0.005 / -0.000
TFER-05750/B	5.750	+0.004 / -0.000	5.750	0.137 - 0.147	0.362 - 0.367	-429	4.976	+0.000 / -0.010	0.375	+0.005 / -0.000
TFER-06000/B	6.000	+0.004 / -0.000	6.000	0.137 - 0.147	0.362 - 0.367	-431	5.226	+0.000 / -0.010	0.375	+0.005 / -0.000
TFER-06250/B	6.250	+0.004 / -0.000	6.250	0.137 - 0.147	0.362 - 0.367	-433	5.476	+0.000 / -0.010	0.375	+0.005 / -0.000
TFER-06500/B	6.500	+0.004 / -0.000	6.500	0.137 - 0.147	0.362 - 0.367	-435	5.726	+0.000 / -0.010	0.375	+0.005 / -0.000
TFER-07000/B	7.000	+0.005 / -0.000	7.000	0.137 - 0.147	0.362 - 0.367	-438	6.226	+0.000 / -0.010	0.375	+0.005 / -0.000
TFER-07250/B	7.250	+0.005 / -0.000	7.250	0.137 - 0.147	0.362 - 0.367	-439	6.476	+0.000 / -0.010	0.375	+0.005 / -0.000
TFER-07500/B	7.500	+0.005 / -0.000	7.500	0.137 - 0.147	0.362 - 0.367	-440	6.726	+0.000 / -0.010	0.375	+0.005 / -0.000
TFER-07750/B	7.750	+0.005 / -0.000	7.750	0.137 - 0.147	0.362 - 0.367	-441	6.976	+0.000 / -0.010	0.375	+0.005 / -0.000
TFER-08000/B	8.000	+0.005 / -0.000	8.000	0.137 - 0.147	0.362 - 0.367	-442	7.226	+0.000 / -0.010	0.375	+0.005 / -0.000
TFER-08250/B	8.250	+0.005 / -0.000	8.250	0.137 - 0.147	0.362 - 0.367	-443	7.476	+0.000 / -0.010	0.375	+0.005 / -0.000
TFER-08500/B	8.500	+0.005 / -0.000	8.500	0.137 - 0.147	0.362 - 0.367	-444	7.726	+0.000 / -0.010	0.375	+0.005 / -0.000
TFER-09000/B	9.000	+0.005 / -0.000	9.000	0.195 - 0.210	0.362 - 0.367	-445	8.122	+0.000 / -0.010	0.375	+0.005 / -0.000
TFER-09500/B	9.500	+0.005 / -0.000	9.500	0.195 - 0.210	0.362 - 0.367	-446	8.622	+0.000 / -0.010	0.375	+0.005 / -0.000
TFER-09750/B	9.750	+0.005 / -0.000	9.750	0.195 - 0.210	0.362 - 0.367	-446	8.872	+0.000 / -0.010	0.375	+0.005 / -0.000
TFER-10000/B	10.000	+0.005 / -0.000	10.000	0.195 - 0.210	0.362 - 0.367	-447	9.122	+0.000 / -0.010	0.375	+0.005 / -0.000
TFER-10500/B	10.500	+0.005 / -0.000	10.500	0.195 - 0.210	0.362 - 0.367	-448	9.622	+0.000 / -0.010	0.375	+0.005 / -0.000
TFER-11000/B	11.000	+0.006 / -0.000	11.000	0.195 - 0.210	0.362 - 0.367	-449	10.122	+0.000 / -0.010	0.375	+0.005 / -0.000

NOTE: MINIMUM LINE ORDER MAY APPLY

INCH SIZE
PISTON SEALS





Sellos y Retenes de San Luis, S.A. de C.V.

TFER/B SERIES - BR.PTFE/NBR

Ref.Number	Bore diameter		Nominal Seal Dimensions				Housing Dimensions			
		Tol	D	S	H	EXP	d1	Tol	H1	Tol
TFER-12000/B	12.000	+0.006 / -0.000	12.000	0.195 - 0.210	0.362 - 0.367	-451	11.122	+0.000 / -0.010	0.375	+0.005 / -0.000
TFER-12500/B	12.500	+0.006 / -0.000	12.500	0.195 - 0.210	0.362 - 0.367	-452	11.622	+0.000 / -0.010	0.375	+0.005 / -0.000
TFER-13000/B	13.000	+0.006 / -0.000	13.000	0.195 - 0.210	0.362 - 0.367	-453	12.122	+0.000 / -0.010	0.375	+0.005 / -0.000
TFER-14000/B	14.000	+0.006 / -0.000	14.000	0.195 - 0.210	0.362 - 0.367	-455	13.122	+0.000 / -0.010	0.375	+0.005 / -0.000
TFER-15000/B	15.000	+0.006 / -0.000	15.000	0.195 - 0.210	0.362 - 0.367	-457	14.122	+0.000 / -0.010	0.375	+0.005 / -0.000

INCH SIZE
PISTON SEALS



NOTE: MINIMUM LINE ORDER MAY APPLY